

TIIG

INJURY SURVEILLANCE IN THE NORTH WEST OF ENGLAND

Warrington Hospital Emergency Department Monthly Bulletin: April 2012 to March 2013

This bulletin provides a breakdown of all injury attendances at Warrington Hospital Emergency Department (ED) between April 2012 and March 2013.

Between April 2012 and March 2013 there were 38,203 ED attendances. This report is inclusive of data from Halton Minor Injuries Unit (n=140). Injury attendances peaked in May (n=3,755), with December (n=2,570) having the least number of injury attendances (**Figure 1**).

There were slightly more male injury attendances than female presenting at Warrington Hospital ED (54%).

Figure 2 presents the age group of injury attendances. Across the whole year, injury attendances were highest for individuals aged 30-59 years (33%).

Table 1 details the injury group of injury attendances. The majority of injury attendances were classified as other injury (78%) and 8% were recorded as a sports injury.

Table 2 illustrates the source of referral for patients presenting with injuries. The majority (96%) of injury attendees self-referred.

Table 3 presents injury attendances by location of incident. Over a third (36%) of attendances were recorded as occurring at home and 6% were reported as being located at work.

Table 4 shows the discharge destination of injury attendances. Thirty-eight per cent of attendees were discharged without requiring any follow-up treatment and over a quarter (28%) were discharged requiring follow-up treatment by a General Practitioner (GP). One in ten (10%) were admitted to the hospital.

Assault attendees presenting at Warrington Hospital ED between April 2012 and March 2013 were mainly male (71%) and over half (52%) were aged between 15 and 29 years. **Table 5** shows that 22% of assaults occurred in a home, 9% in a public place and 4% at work.

Figure 1: Gender of injury attendances by month, April 2012 to March 2013

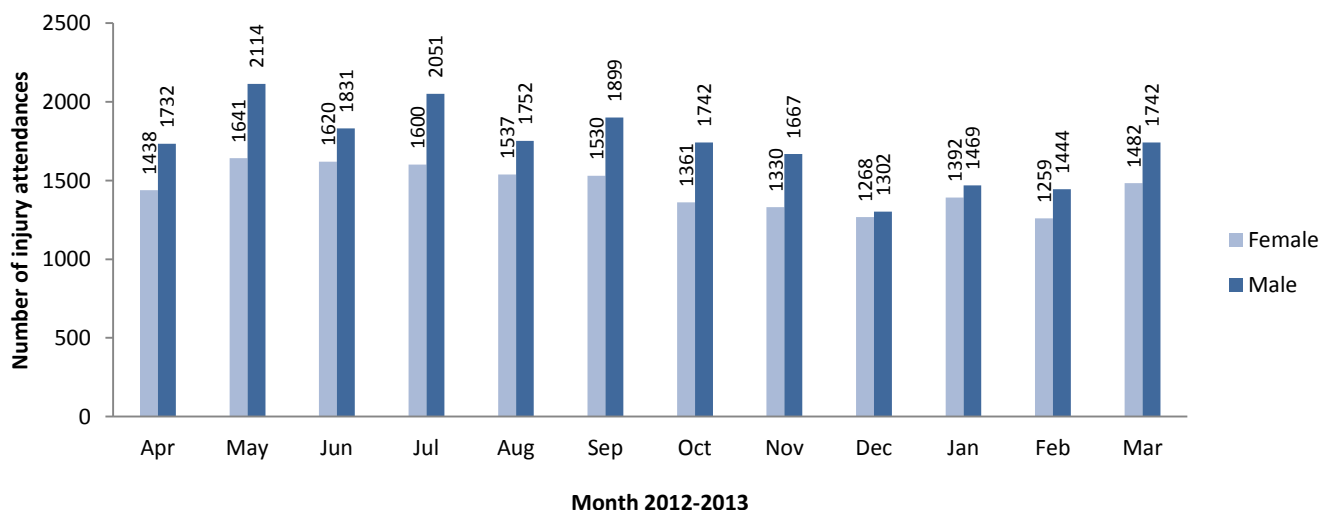


Figure 2: Age group of injury attendances by month, April 2012 to March 2013

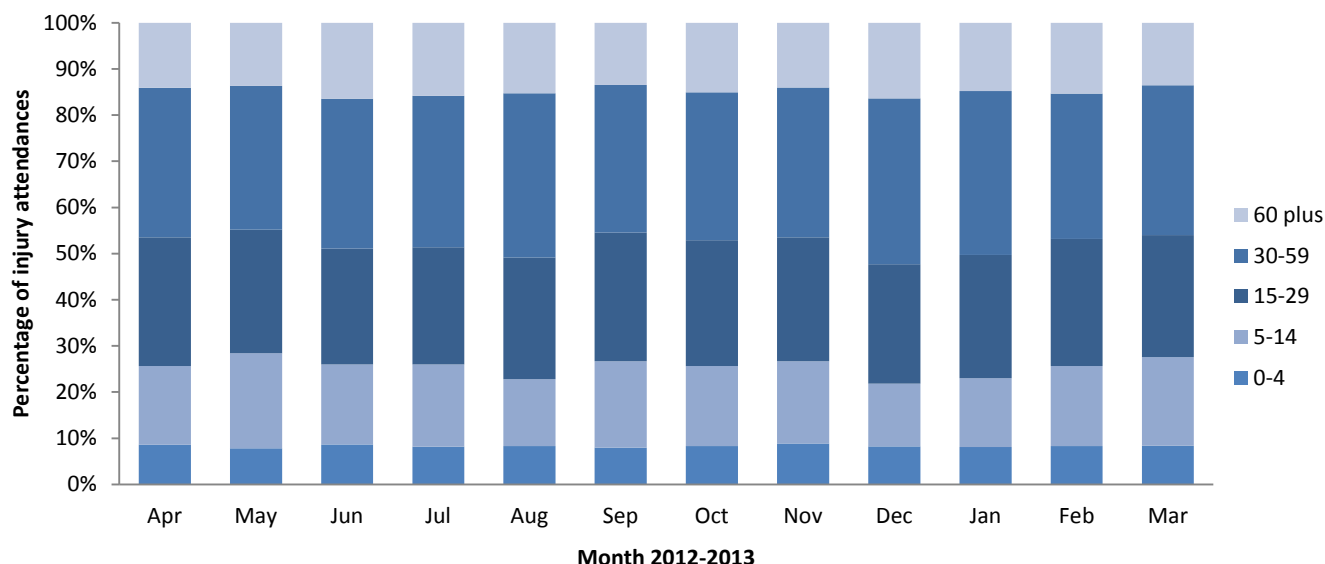


Table 1: Injury attendances by injury group, April 2012 to March 2013*

Injury group	Apr	May	Jun	Jul	Aug	Sept	Oct	Nov	Dec	Jan	Feb	Mar	Total	%
Other injury	2512	3044	2705	2993	2681	2691	2353	2296	1952	2236	2062	2456	29981	78
Sports injury	269	321	241	254	208	322	312	260	120	173	256	331	3067	8
Road traffic collision	209	206	258	192	220	233	230	267	274	237	204	216	2746	7
Assault	128	109	171	134	108	112	138	106	144	133	104	120	1507	4
Deliberate self-harm	52	75	76	78	72	71	70	68	80	82	77	101	902	2
Total	3170	3755	3451	3651	3289	3429	3103	2997	2570	2861	2703	3224	38203	100

* Due to small numbers firework injury (n=6) has been included in the other injury group.

Table 2: Injury attendances by source of referral, April 2012 to March 2013^{^,1}

Source of referral	Apr	May	Jun	Jul	Aug	Sept	Oct	Nov	Dec	Jan	Feb	Mar	Total	%
Self-referral	3081	3637	3335	3505	3180	3322	3001	2879	2452	2749	2586	3077	36804	96
Emergency services	38	35	59	73	45	85	67	61	38	42	58	73	674	2
A&E/ Other HCP	43	48	38	42	39	13	29	39	41	54	45	58	489	1
GP	***	17	7	15	19	5	***	***	***	***	***	***	77	0
Work	***	10	7	12	***	***	0	***	14	8	5	***	71	0
Educational establishment	***	<10	5	***	0	***	***	13	<20	5	5	10	69	0
Police	0	***	0	***	***	***	0	0	6	***	***	***	<20	0
Other	0	0	0	0	***	0	0	***	0	***	0	0	***	0
Total	3170	3755	3451	3651	3289	3429	3103	2997	2570	2861	2703	3224	38203	100

[^] A&E = Accident & Emergency, HCP = Health Care Provider, GP = General Practitioner

Table 3: Injury attendances by incident location, April 2012 to March 2013

Incident Location	Apr	May	Jun	Jul	Aug	Sept	Oct	Nov	Dec	Jan	Feb	Mar	Total	%
Other	1302	1504	1497	1458	1317	1503	1380	1265	1132	1234	1178	1384	16154	42
Home	1366	1511	1291	1353	1389	1189	911	1002	869	1007	908	1003	13799	36
Non specified	169	194	161	327	230	292	278	173	155	251	218	315	2763	7
Work	141	193	193	195	166	175	201	196	158	160	150	175	2103	6
Educational establishment	86	187	128	138	0	151	178	228	147	135	148	225	1751	5
Public place	106	166	181	180	187	119	155	133	109	74	101	122	1633	4
Total	3170	3755	3451	3651	3289	3429	3103	2997	2570	2861	2703	3224	38203	100

¹ *** Please note that all numbers less than five have been suppressed in line with patient confidentiality and if there is only one number less than five in a category then two numbers will be suppressed at the next level (e.g. <6) in order to prevent back calculations from totals.

Table 4: Injury attendances by discharge destination, April 2012 to March 2013^{^2}

Discharge	Apr	May	Jun	Jul	Aug	Sept	Oct	Nov	Dec	Jan	Feb	Mar	Total	%
Discharged - did not require follow up treatment	1107	1315	1272	1242	1178	1329	1126	1213	950	1239	1020	1365	14356	38
Discharged to follow up provided by GP	996	1074	918	1007	951	1008	943	831	676	663	789	753	10609	28
Admitted to the hospital	289	410	396	439	410	294	257	269	260	258	230	285	3797	10
Referred to out-patient clinic	328	392	330	367	264	274	266	250	231	271	261	309	3543	9
Referred to fracture clinic	261	339	306	336	258	304	265	260	249	258	274	318	3428	9
Transferred to other HCP	73	97	106	131	109	112	130	98	121	94	68	107	1246	3
Left department before being treated	102	118	108	109	106	93	105	60	70	65	52	70	1058	3
Referred to A&E clinic	<20	10	11	<20	13	15	11	16	<15	<15	9	17	156	0
Other	***	0	***	0	0	0	0	0	***	***	0	0	<10	0
Died in department	0	0	***	***	0	0	0	0	0	0	0	0	***	0
Total	3170	3755	3451	3651	3289	3429	3103	2997	2570	2861	2703	3224	38203	100

[^] A&E = Accident & Emergency, HCP = Health Care Provider, GP = General Practitioner

Table 5: Location of assault for assault attendances, April 2012 to March 2013²

Incident location	Apr	May	Jun	Jul	Aug	Sept	Oct	Nov	Dec	Jan	Feb	Mar	Total	%
Non specified	71	62	98	62	67	61	89	58	81	80	58	67	854	57
Home	34	25	49	36	21	30	15	17	37	29	19	18	330	22
Public place	12	13	12	15	6	7	11	15	12	7	12	14	136	9
Other	***	***	***	12	8	<15	13	***	***	7	6	11	81	5
Work place	8	***	8	<10	6	0	<10	***	<10	<10	<10	***	67	4
Educational establishment	***	***	***	***	0	***	***	8	7	***	***	<10	39	3
Total	128	109	171	134	108	112	138	106	144	133	104	120	1507	100

Published June 2014,
 Stuart Cole (TIIG researcher)
 Centre for Public Health, Faculty of Education, Health and Community, Liverpool John Moores University
 2nd Floor, Henry Cotton Campus, 15-21 Webster Street, Liverpool, L3 2ET
 Contact: Jennifer Brizell, Tel: 0151 231 4500, Email: j.s.brizell@ljmu.ac.uk
 Website: www.tiig.info

² *** Please note that all numbers less than five have been suppressed in line with patient confidentiality and if there is only one number less than five in a category then two numbers will be suppressed at the next level (e.g. <6) in order to prevent back calculations from totals.